

LECTURE # 05

COMPONENT SHARING

MODEL

Department: City and Regional Planning, LCWU

Subject : Urban Renewal and Conservation

Course Code: Maj/Crp-303

Course Instructor: Ms. Faryal Khalid

HOUSING POLICIES IN PAKISTAN

- ▶ Punjab Katchi Abadi Act, 1992 was enacted for the provision of regularization, development and improvement of Katchi Abadis.

EFFORTS TOWARDS SOLVING THE PROBLEMS

- ▶ A Component Sharing Model has evolved from Orangi on component sharing concept of development with people and government as partners.
- ▶ The concept was developed and successfully implemented by OPP-RTI (NGO). The illustration is, there are two levels of a modern sanitation system

COMPONENT SHARING MODEL FOR DEVELOPMENT

- ▶ Internal Development comprising of :
 - ▶ Inside the house-Sanitary latrine
 - ▶ In the lane-Underground sewerage line
 - ▶ Secondary or collector sewerage
- ▶ External Development which constitutes:
 - ▶ Trunk sewer/natural nala development
 - ▶ Treatment plant

COMPONENT SHARING MODEL FOR DEVELOPMENT

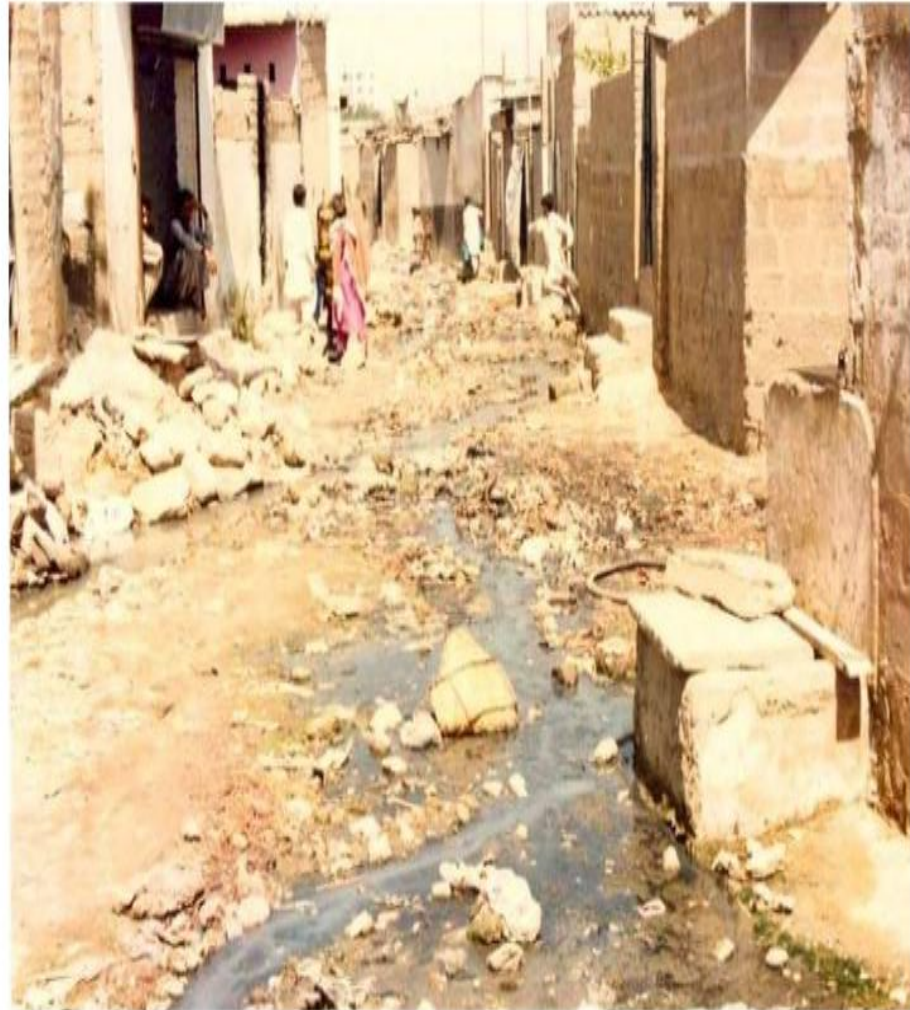
- ▶ Under this component sharing concept the communities are responsible for internal development and the government takes care of external development of the respective settlements.
- ▶ The concept is now being replicated in many cities in Pakistan

OPP'S HOUSING PROGRAMME

- ▶ The OPP'S Housing Programme has three basic components.
 - ▶ The upgrading of manufactured items so as to reduce the cost.
 - ▶ Improving the skills of artisans through a training program
 - ▶ Raising awareness levels of the residents regarding construction technology.

Problems that mobilized people

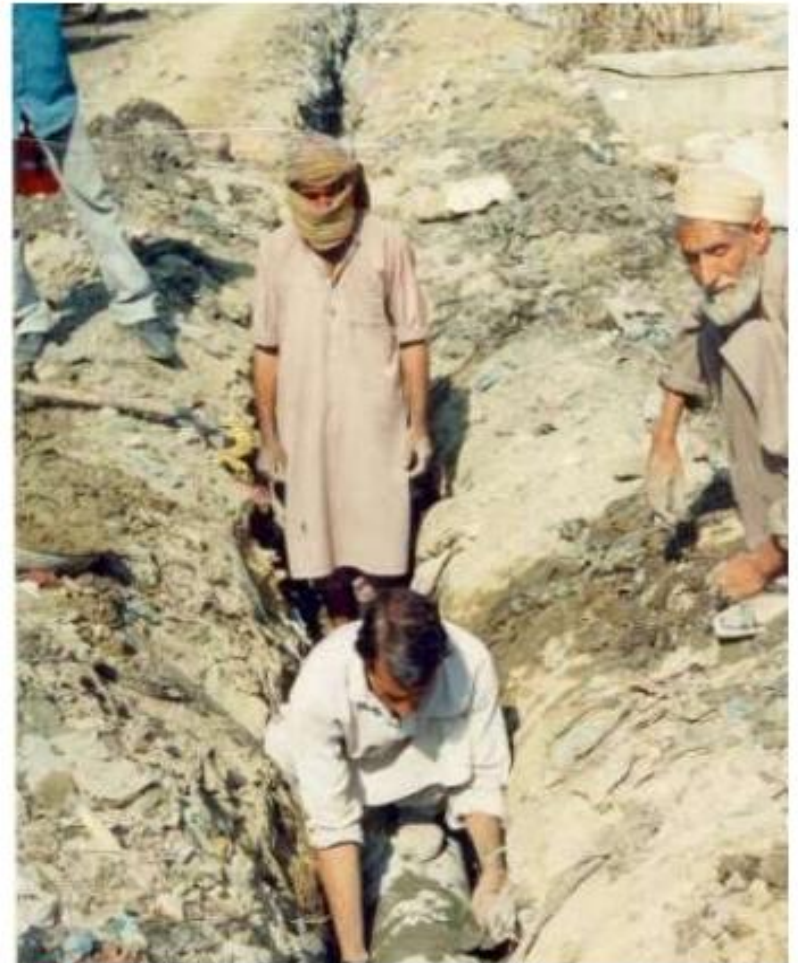
SANITATION: THE MAJOR ISSUE



Communities organize themselves



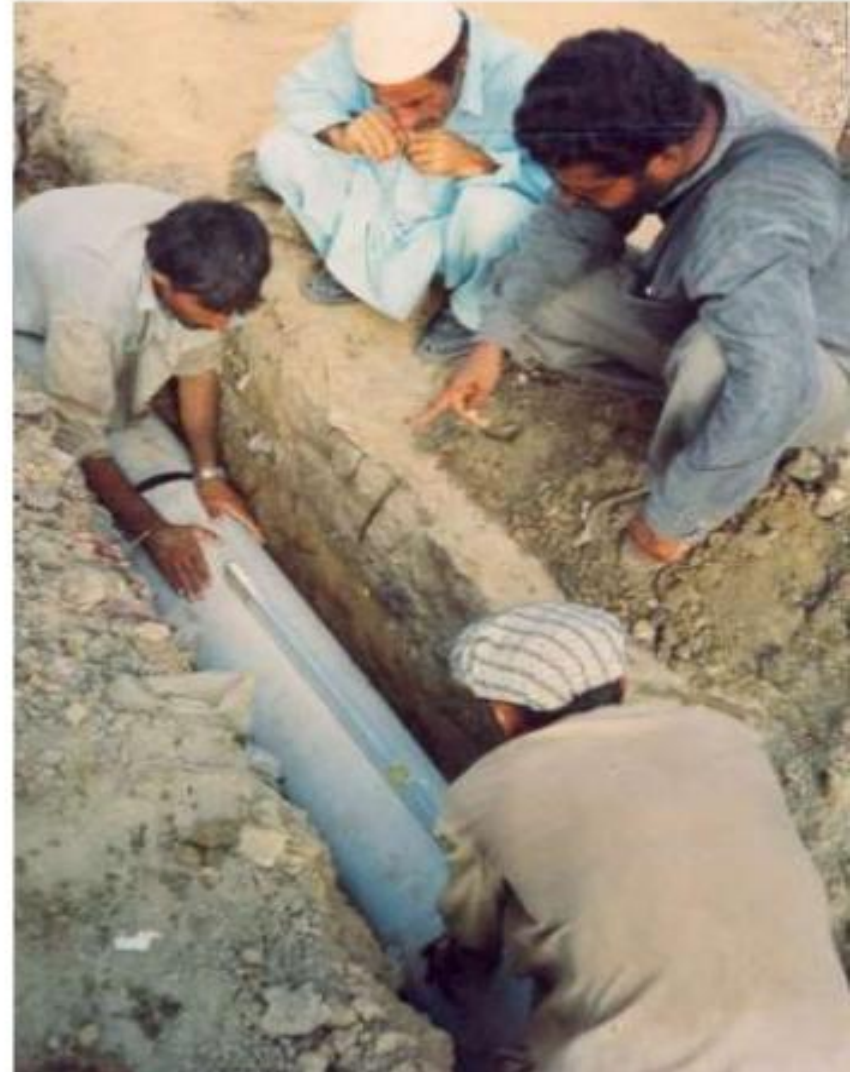
Peoples efforts



Lane people organize, money collection is in progress



construct underground sewer



REPLICATION OF THE MODEL

- ▶ Since 1983, community organizations activists and non-government organizations from other Katchi-Abadies and informal settlements in Karachi and other cities of Pakistan have applied the Orangi Pilot Projects (OPP) for help in replicating its Low Cost Sanitation Program in their areas.
- ▶ Sukkur Urban Basic Services Project is also an example of the replication of the model

EVICTION IS ITSELF A PROBLEM

- ▶ Forced evictions have been an increasing threat to the urban poor of Squatter Settlements.
- ▶ Since 1992, the number of houses demolished in Karachi alone 18,631.
- ▶ As a result of these evictions, 152,161 people lost their shelter.
- ▶ Apart from above-mentioned evictions, according to government, over 16,000 housing units and 3600 commercial units are expected to be displaced due to Lyari Expressway Project.

Cont..

- ▶ Currently, around 179,500 households in the different parts of the country are facing threat of evictions due to various projects of the government.

COMMUNITY RESPONSE AGAINST EVICTIONS

- ▶ People do not believe that eviction will take place until it begins
- ▶ They go to their members of nationals and provincial assemblies and elected local government representatives.
- ▶ They collect money and go to court, often with insufficient documentation.
- ▶ They hold demonstrations at the press club. The press inevitably reports their point of view and so does the electronic media.

Cont..

- ▶ Contact NGOs and get them to take up the issue at various NGO (national and international) and government forums.
- ▶ Hold all party conferences. Here representatives of political parties are invited together to listen to the concerns of the effected community and to determine a future course of action
- ▶ Hold a “people’s assembly”. If the assembly is large enough, it receives a significant coverage of media
- ▶ Resort to violence so as to prevent demolitions.

REFERENCES

- ▶ “Squatter Settlement in Karachi” by Arif Hassan