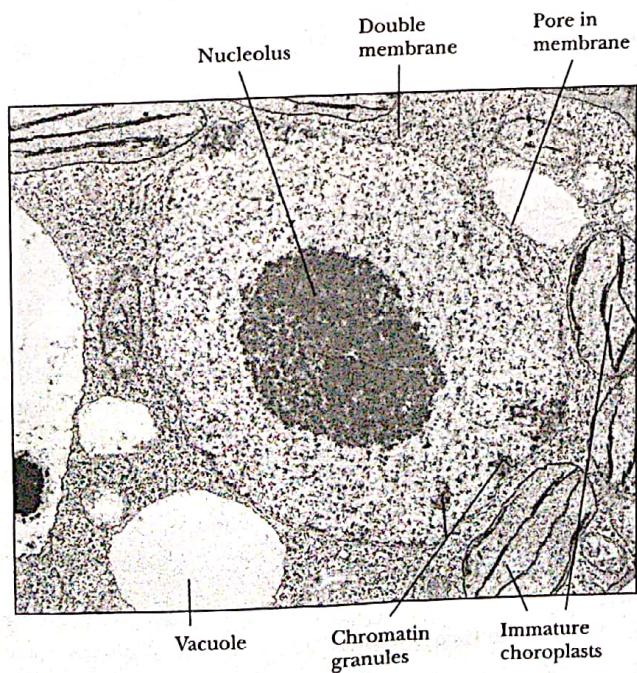


▲ **FIGURE 1.11** A comparison of (a) a typical animal cell, (b) a typical plant cell, and (c) a prokaryotic cell.



Courtesy of Dr. Sue Ellen Gruber, Mt. Holyoke College

◀ **FIGURE 1.12** The nucleus of a tobacco leaf cell (magnified 15,000×).